

“Technology & Transportation...Hand in Hand.”

Key Benefits

- Intuitive and easy to use graphical interface.
- Provides control to reduce transportation costs.
- Improves shipping throughput and efficiency.
- Reduces errors with improved visibility.
- Database independent.
- Flexible and scalable technology let's you quickly adapt to changing business requirements.

Connectivity Options

- **XML**
Recommended method of interface.
- **ODBC**
ODBC drivers loaded on each shipping workstation.
- **File**
A common network drive setup to see both the host and shipping system.
- **TCP/IP**
Host configured as TCP/IP Server and shipping workstation as the client.

The Business Case

- I need a shipping system that is simple to navigate yet provides a wealth of functionality.
- I need to combine the packing and shipping step into one.
- I need a cost-effective way to integrate all my carriers to our host system.
- I lack visibility and information for all my shipments.

Operational Drivers

Streamline the flow of distribution; ensure consistent shipping practices and processes are executed across the business; eliminate islands of automation and information; increase shipping throughput and worker productivity.

Financial Drivers

Reduce redundant and costly manual labour; maximize consolidation opportunities and save on freight; optimize carrier and/or service level selection.

Strategic Drivers

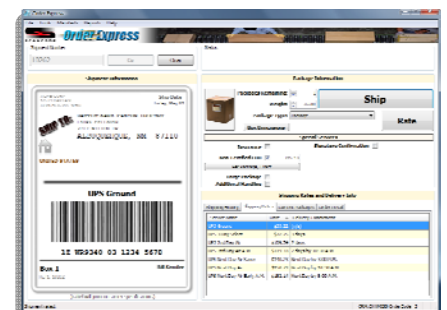
Meeting business targets means automatically incorporating business rules that comply with ALL trading partners; ensure 'speed-to-market' with fast and accurate order turnaround; provide real-time visibility of customers' orders and inventory throughout the order cycle.

Core Capabilities

The Scancode **OrderExpress** (OE) Smart Client is an easy to use and intuitive shipping interface that is designed to automate the transportation and fulfillment process. It provides a rich user experience with a clean and highly scalable integration path. The core capabilities of this module include:

Rating

- Industry leading multi-carrier compliance engine to route small package carrier, TL, LTL, multi-modal, fleet and messenger; incorporates a variety of different rating methodologies with uniform execution.
- Compliant with all major North American carriers.
- Service level selection based on transit time routing and/or arrival date.
- Density and cube rating.
- Order/multi-piece level routing and rating.
- Rule-based shipment consolidation logic.
- Multi-class rating (LTL/TL).
- Real-time order consolidation.
- Rule driven handling charge.
- Fuel surcharge management.
- **ExpressCube™** * support for integrated package cubing.



ORDEREXPRESS OVERVIEW

Documents / Labels

- Compliant shipping labels and documents.
- HAZMAT/Dangerous Goods documentation.
- VICS Bills of Lading.
- One End-of-Day, Master Bill of Lading for all orders to a destination.
- Automated bar code processing capability.
- Email notification provides proactive, self-service package tracking functions.
- Direct Customs Broker EDI integration of customs forms.
- Built-in report writer.

Execution / Automation

- Provides shipment, order and line item visibility.
- Create carton level contents.
- Capture weight and dimensions on the fly.
- Automatic allocation of freight costs by GL code.
- 'Piece at a time' processing and labeling.
- 'Ship with item scan' retrieves and processes single item orders.
- Authorization controls.

Technical

- Available as a Networked or Browser-based Desktop solution.
- Fast and flexible integration using VB Script events—completely editable.
- Each workstation can be configured with independent scripting rules.
- All information is stored as XML data and can be passed to Microsoft® SQL database which improves archiving, back-up and stability.
- Incorporates 32 entry and exit points to support advanced business logic requirements.
- Customizable processing screens let you control what you want the shipper to edit—complete administration of the user experience is contained in the main console.

Hardware & Software Specifications

Scancode **OrderExpress** (should be installed on a server that meets the following minimum specifications:

Required Software

- Windows Server 2003 or higher (with appropriate licenses)
- Microsoft SQL 2005 (Express or Full Edition) for OE Enterprise deployments
- Microsoft IIS 6+
- Microsoft .NET 3.5 framework

Required Hardware

- Processor capable of supporting Microsoft .NET 3.5 framework
- 4 GB RAM
- 100 MB HD availability for installation
- 16 GB HD availability for storage (depending on database server)
- 10/100 Mbps Ethernet Network Connection (TCP/IP)

A RAID solution (or the equivalent) should be considered to maintain redundancy in case of hardware failure. Backup strategies that are consistent with your own corporate policies should be employed.

WORKSTATION CLIENT INSTALLATION

The Scancode **OrderExpress** Workstation Client should be installed on a PC workstation that meets the following minimum specifications:

Required Software

- Windows XP Pro SP2, Vista (32-bit)
- MS Internet Explorer 6.0+
- Microsoft .Net 3.5 framework

Required Hardware

- Processor supporting Microsoft .Net 3.5 framework
- 3 GB RAM
- Monitor resolution of 1024x768 or higher
- 30 MB Free Drive Space
- Ports to support any required peripherals
- Ethernet Network Card

About Scancode Systems Inc.

Scancode is a leading developer and integrator of advanced logistics software and the primary source for carrier-compliant shipping solutions and warehouse functionality since 1986.

Its comprehensive suite of "feature rich" distribution modules provide enterprise-wide connectivity between host systems, carriers and trading partners that maximize productivity, ensure compliant business practices and provide supply chain visibility.

Scancode serves clients throughout North America with single or multi-site installations that utilize both standalone and integrated modules with major ERP and business applications.